

High Performance X-Band LNB

General Information

Intended for either indoor or outdoor environments, Locus Microwave, Inc.'s LB61000 X Band LNB is designed for use in professional outdoor systems. Including an input WG isolator and interstage Tx reject filter, superior performance is guaranteed at reasonable cost.

Specifications included are for a standard product. Please contact the factory for your custom/specific performance needs.

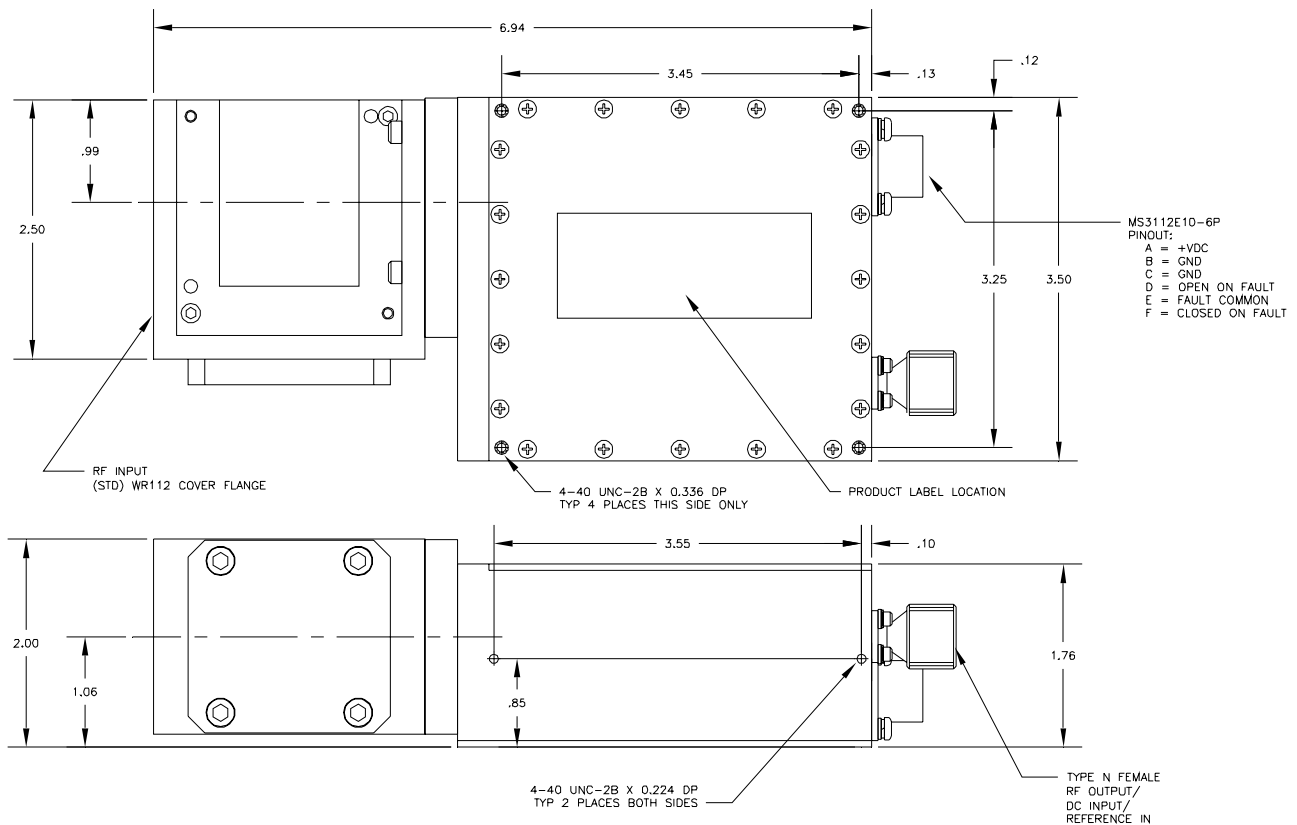
Features:

- Input WG Isolator
- Outdoor packaging
- Choice of 45 or 50K Noise
- Integral Tx reject filter
- Input waveguide window
- MTBF >150,000 hours

Options:

- Custom Packaging
- Internal Reference

Outline Drawing



Specifications are subject to change at the discretion of Locus Microwave, Inc.

176 Technology Dr., Suite 200, Boalsburg, PA 16827 USA • Tel: +1 814 466 6275 • Fax: +1 814 466 1104

www.locusmicrowave.com

	Range	Units	Notes
Electrical Specifications			
Input Frequency	7.25-7.75	GHz	
Output Frequency	950-1450	MHz	
Local Oscillator Frequency	6.30	GHz	Phase Locked to ext. ref.
External Reference (Standard)			
Frequency	10	MHz	
Level	0 dBm +/-5 dB		
Phase Noise (SSB)			
@ 1 kHz offset	-72 max., -76 typ.	dBc	
@ 10 kHz offset	-82 max., -85 typ.	dBc	
@ 100 kHz offset	-92 max. -100 typ.	dBc	
Noise Temperature	50 max. (45 optional)	K	@+23°C case temperature
Gain	50 min. (60 optional)	dB	
Gain Flatness	+/-1.5 max.	dB	per full band
Gain Slope	+/-0.5 max.	dB	per 40 MHz
P_{1dB}	+10 min.	dBm	
OIP ₃	+20 min.	dBm	
Input VSWR	1.20 typ., 1.25 max.	:1	Input Isolator Included
Output VSWR	1.5 typ., 2.00 max.	:1	
Overdrive	0 max.	dBm	non-damaging
LO Leakage @ RF Input	-80 max.	dBm	
Signal Independent Spurious	-60 max.	dBm	in band
Signal Related Spurious	-65 max.	dBc	0 dBm output max.
Desense level (7.9-8.4 GHz)	-25 max.	dBm	Interstage filter included
Image Rejection	60 min.	dB	
Power Requirement			
Input Voltage	+12 to +18	vdc	
Current	600 nom.	mA	
Mechanical Specifications			
Size (approximate)	6.93 x 3.5 x 1.76	inches	including input WG isolator
Weight	2.0 nom.	lbs.	
Finish	paint	white	epoxy enamel (tan & green avail.)
Connectors			
RF Input	WR112 Flange		CPR equivalent available
RF Output	Type N	Female	SMA Female optional
Power and External Reference	via RF Output Connector		
Power/Alarm	MS3112E10-6P		mate supplied
Environmental			
Operating Temperature	-40 to +60	°C	
Humidity	100	%	with condensation