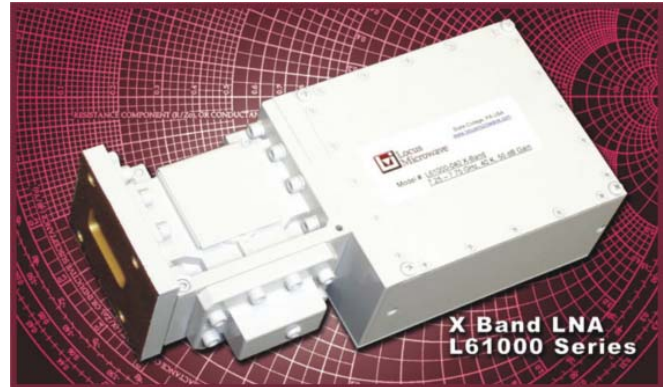


High Performance X-Band Low Noise Amplifiers

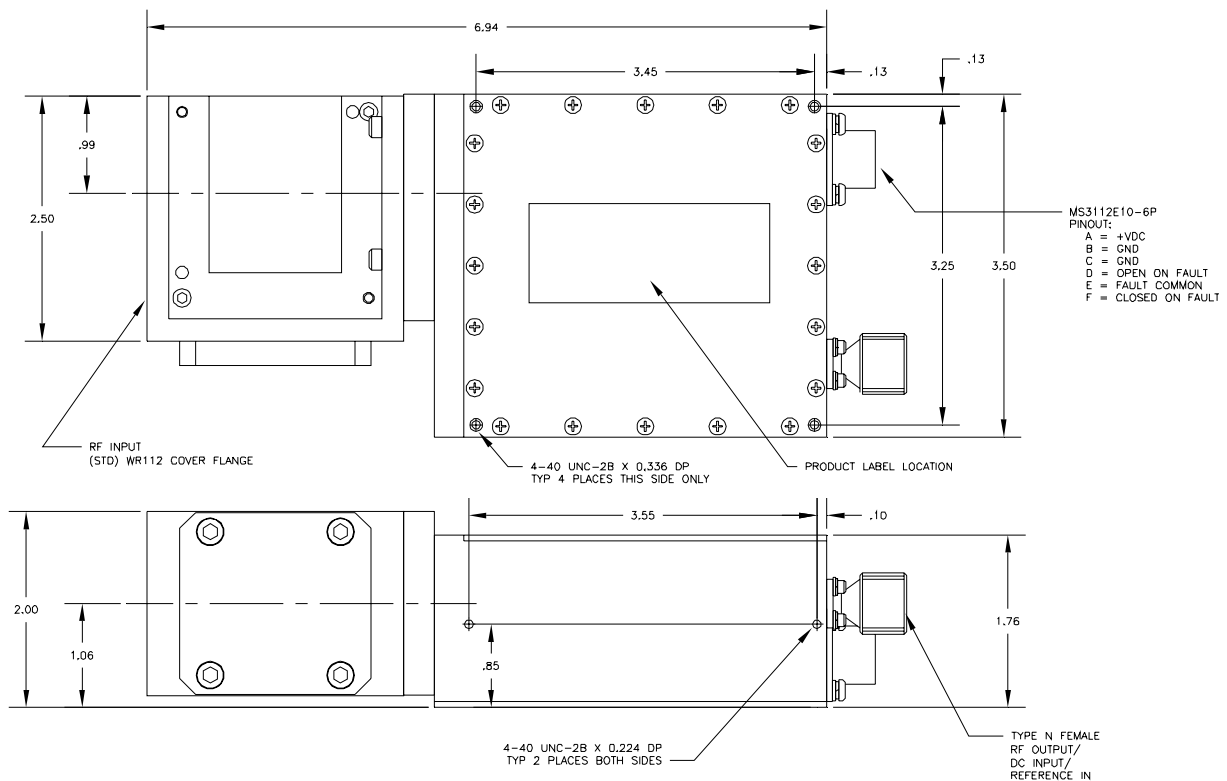
General Information

Intended for either indoor or outdoor environments, Locus Microwave, Inc.'s L61000 X Band Low Noise Amplifiers provide a combination of superior performance, reliability and cost effectiveness.

Specifications included are for a standard product. Please contact the factory for your custom/specific performance needs.



Outline Drawing



	Range	Units	Notes
Electrical Specifications			
Frequency	7.25 - 7.75	GHz	
Noise Temperature ¹ (choices)	45 or 40 max.	K	@+23°C
Gain	50 min.	dB	60 dB optional
Gain Flatness (incl. Tx Reject Filter)	+/-1.0 max.	dB	per full band
Gain Slope	+/-0.2 max.	dB	per 40 MHz
P_{1dB}^2	+15 min. (+20 dBm optional)	dBm	
OIP_3^2	+25 min. (+30 dBm optional)	dBm	
VSWR			
Input	1.20 typ., 1.25 max.	:1	
Output	1.25 typ., 1.50 max.	:1	
Overdrive	0 max.	dBm	non-damaging
interstage Transmit Reject Filter incl.	-25 max.	dBm	desense level (7.9-8.4 GHz)
AM/PM Conversion	0.05 max.	°/dB	@-5 dBm output
Group Delay			
Linear	0.03 max.	ns/MHz	per 40 MHz
Parabolic	0.003 max.	ns/MHz ²	per 40 MHz
Ripple	0.3 max.	ns p-p	per 40 MHz
Power Requirement			
Input Voltage	+12 to +24	vdc	
Current ⁴	285 nom.	mA	
Fault Alarm	contact closure	Form 'C'	current sensing
Mechanical Specifications			
Outline	see outline		
Weight	1.9 nom.	lbs.	
Finish	paint	white	epoxy enamel
Connectors			
RF Input	WR 112 Cover Flange ³		
RF Output	Type N	Female	
Power	6 pin	MS-type	plug
Environmental			
Operating Temperature	-40 to +70	°C	
Humidity	100	%	with condensation

Notes:

- Specify Noise Temperature and Gain at time of order.
- Consult factory for higher output power.
- CPR112G optional.
- Dependent on Gain and output Power.

Specifications are subject to change at the discretion of Locus Microwave, Inc.

176 Technology Dr., Suite 200, Boalsburg, PA 16827 USA • Tel: +1 814 466 6275 • Fax: +1 814 466 1104

CODAN SATCOM

www.locusmicrowave.com

08/09

